



Westmorland
& Furness
Council

Crime & Community Safety Strategic Assessment (CCSSA) 2023

Westmorland & Furness CSP Summary

[westmorlandandfurness.gov.uk](https://www.westmorlandandfurness.gov.uk)



Westmorland & Furness
Community Safety
Partnership



Westmorland & Furness Community Safety Partnership (CSP)

This document has been prepared at the request of the Westmorland & Furness CSP to provide a summary of the Crime and Community Safety Strategic Assessment (2023). The key findings have been aligned to each of the CSP Strategic Groups:



Westmorland & Furness CSP Priorities

Domestic Abuse



The principle of **Prevention** will be adopted when seeking solutions & action planning to resolve these issues

Road Safety



These will be looked through the lens of **Anti-social behaviour, Substance Misuse, Children & Young People**

Re-offending



Solutions and actions will seek to be evidence based and performance assessment will seek to incorporate **Lived Experience**

Quick Stats

Priority

Domestic Abuse

6% increase in DA incidents and crimes in Cumbria since 2019 (+554 incidents and crimes)

Compared to 43 Police Force Areas across England & Wales, Cumbria is ranked 16th lowest rate of Domestic Abuse related crimes and incidents.

Priority

Road Safety

Since 2018 there has been a -28.1% decline in Road Traffic Accidents in Westmorland & Furness

27.9% of Road Traffic Accidents that occurred in Westmorland & Furness resulted in Death or Serious Injury (2022)

Priority

Re-offending

24.5% of offenders in W&F reoffended (2020/21)

Since 2016 data shows a declining trend in reoffending levels in Westmorland & Furness (29.4% 2016/17 compared to 24.5% in 2020/21)

Average Number of Offences per Re-Offender: 3.3

Drug Related Offences

Drug Related Offences have been increasing in Westmorland & Furness over the last 12 months

463 Drug Trafficking and Possession Offences (2022-23)

Over the last 10 years deaths related to drug use have been increasing in Cumbria

Young people referred to Local Authority Support Services for Drug and Alcohol Misuse are more likely to be male, aged 15 to 17 years

Alcohol Related Crime

Alcohol Related Crime accounts for 1 in 6 offences in Westmorland & Furness

Trends show an increase in alcohol-related crime in Westmorland & Furness compared to the previous year (2021-22)

1,205 Alcohol Specific Hospital Admissions (2021/22)

Acquisitive Crime

786 shoplifting offences (2022-23)

Fear of having their home broken into is one of the top 5 concerns for Cumbrian Residents

+12.9% increase in residential burglaries compared to previous year (2021-22)

Theft from a motor vehicle is one of the top 5 concerns for Cumbrian Residents

Top 5 concerns for Cumbrian Residents:

1. Antisocial Behaviour
2. Burglary
3. Rubbish or Littering
4. Thefts from vehicles
5. Attacks by Strangers

© Experian 2023 - All rights reserved.

Crime rates and victim rates are significantly higher in the 20% most deprived areas compared to the 20% least deprived

Those living in more deprived communities are more likely to be victims of crime and to fear becoming a victim of crime



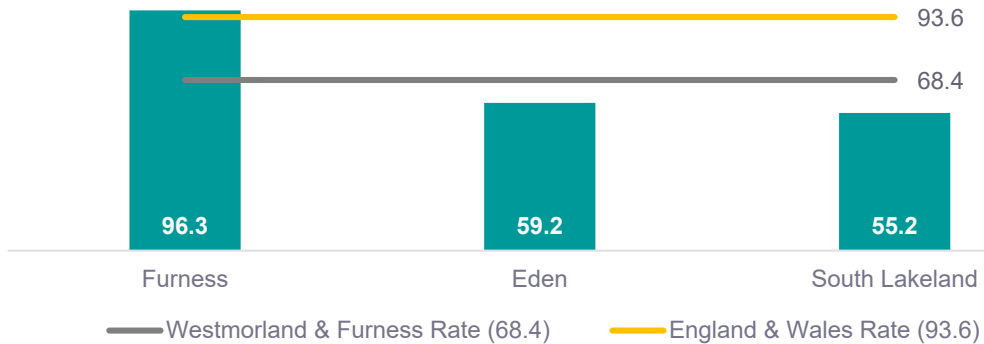
All Recorded Crimes (excl. Fraud)

Indicator	Count (2022/23)	Rate per 1k Population	England & Wales (Rate)	RAG Compared to National Rate	Trend over 5 years
All Recorded Crime	15,524	68.4	93.6		Increase
All Incident Logs	12,542	55.2	N/A	N/A	N/A

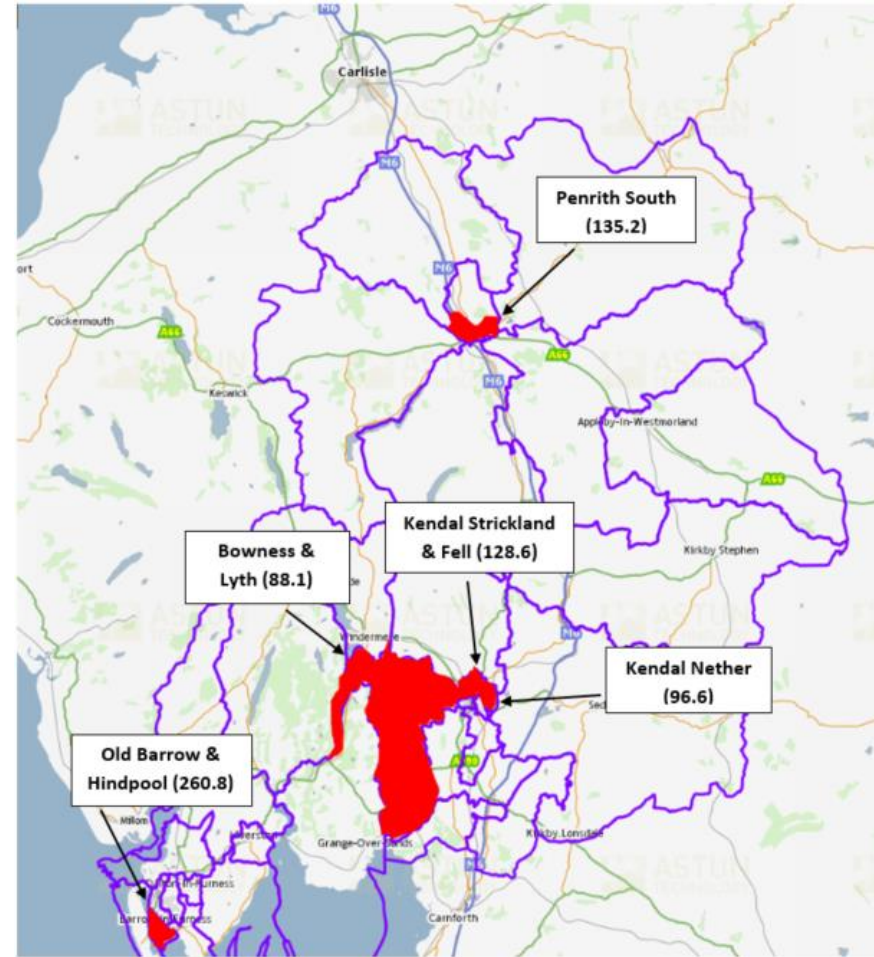
Overall Westmorland & Furness has an All Recorded Crime Rate of 68.4 per 1,000 population, below the national rate (93.6)

9.8% increase in Police Recorded Crime (excl. Fraud) in Westmorland & Furness over the last five years (+1,381 recorded crimes)

All Recorded Crime, Rate per 1,000 Population: Locality Areas



Top 5 Wards with highest All Recorded Crime Rates per 1,000 Population



Westmorland & Furness Wards with Highest All Recorded Crime Rates © Crown Copyright. All rights reserved. Licence No: 100023754

Victims of all recorded crime are most likely to be female/transgender female aged 21-40 years old

Offenders are most likely to be male/transgender male aged 21-40 years old

Just over 1 in 10 male/transgender male offenders are younger, aged 11-15 years old (11.6%)



Local Focus Hubs

Indicator	Count (2022/23)	Rate per 1k Population	England & Wales (Rate)	RAG Compared to National Rate	Trend over 5 years
Antisocial Behaviour	2,039	9.8	17.3		Decrease
Individual Hate Crimes	360	1.6	2.5		Increase
Criminal Damage (incl. Arson)	1,865	8.2	8.9		Decrease

Antisocial Behaviour (ASB)

26.7% decrease of Antisocial behaviour incidents compared to previous year (2021/22)

Incidents occurring at rate of 9.0 per 1,000 population. Lower than national rate 17.3

The majority of ASB incidents in Westmorland & Furness were related to nuisance

ASB incidents decreasing due to success of ASBRA (ASB Risk Assessment Process) and Cumbria Constabulary investment in Neighbourhood Policing

Community Cohesion

The Number of Individual Hate Crimes in Westmorland & Furness have increased by 33.8% since 2018 (+91 crimes)

As with the national picture the majority of Hate Crimes were racially motivated

The increase in recorded hate crime offences is considered to be driven by improvements in crime recording by the Police and better identification of what constitutes a hate crime

There is concern nationally that there may be an increase in Anti-Semitic and Islamophobia hate crimes in the wake of the current Middle East conflict

Community Safety Concerns

Main Community Safety Concerns for Cumbrian residents include: Antisocial Behaviour, burglary, thefts from vehicles and attacks by strangers

Top Concern Furness Locality: **Antisocial Behaviour**

Top Concern Eden & South Lakeland Locality: **Home being Broken into**

Those living in deprived areas are more likely to have experienced or witnessed ASB

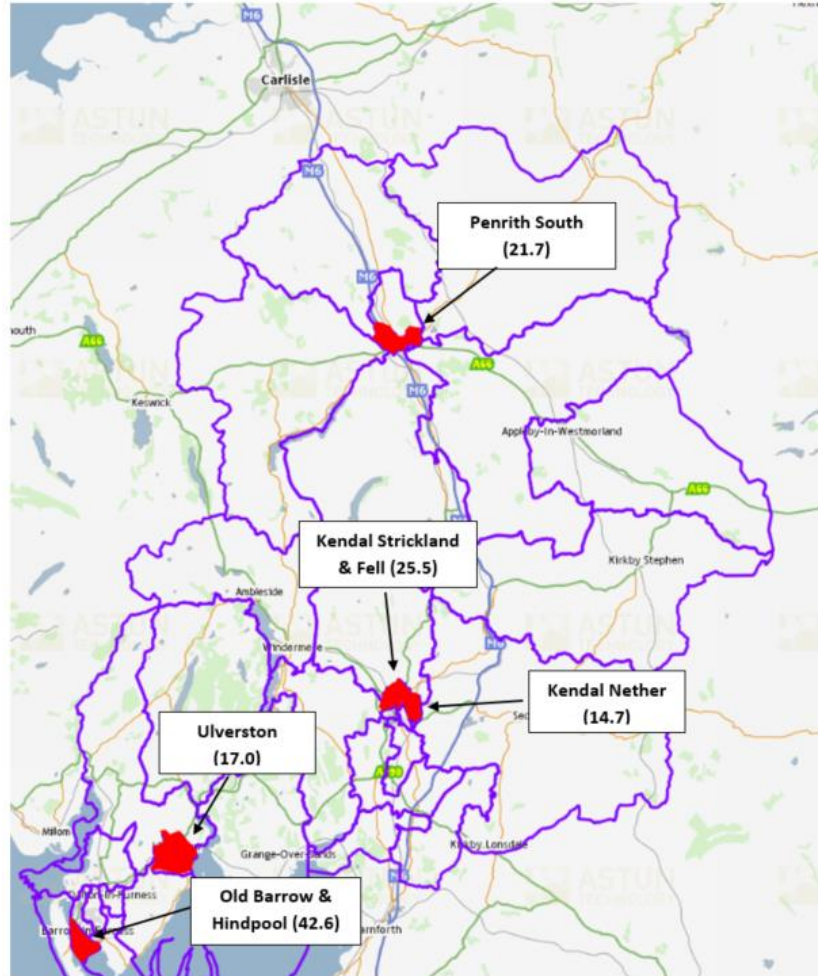
Those with long term physical or mental health conditions are more likely to have experienced or witnessed ASB

Those from ethnic minorities (incl. white minority) backgrounds, LGBTQ+ communities & people with disabilities are more likely to be victims of hate crime



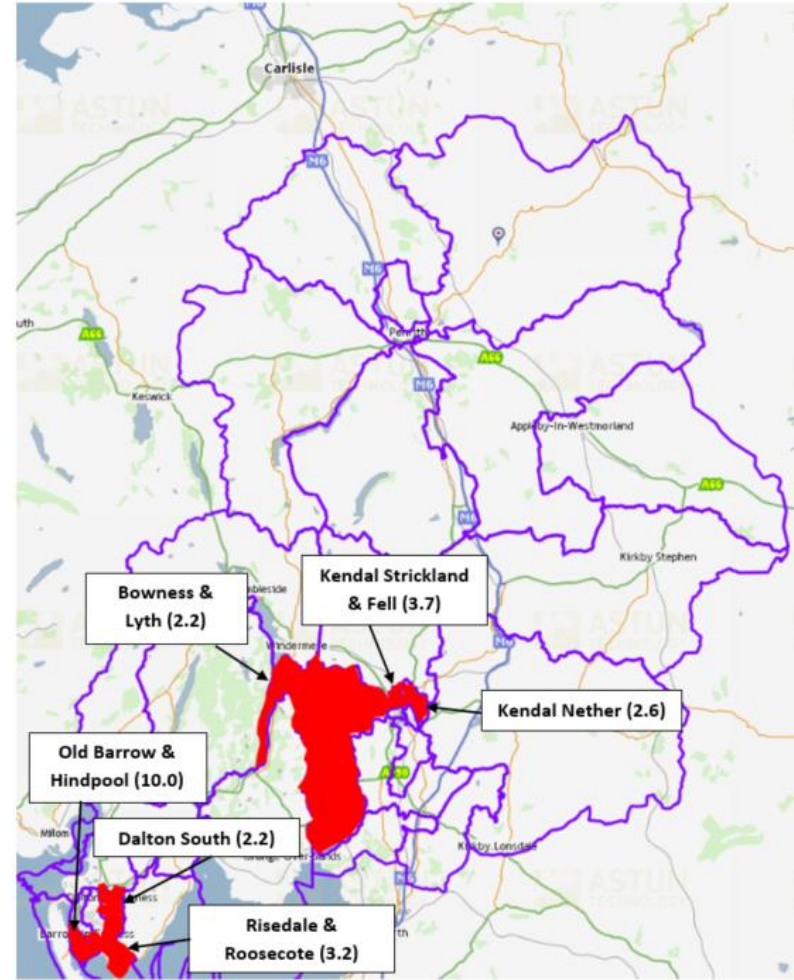
Local Focus Hubs

Top 5 Wards with highest Antisocial Behaviour Rates per 1,000 Population



Westmorland & Furness Wards with highest ASB Rates © Crown Copyright. All rights reserved. Licence No: 100023754

Top 5 Wards with highest Hate Crime Rates per 1,000 Population



Westmorland & Furness Wards with Highest Hate Crime Rates © Crown Copyright. All rights reserved. Licence No: 100023754



Reducing Crime

Reoffending

Priority

Since 2016 data shows a declining trend in reoffending levels in Westmorland & Furness (29.4% 2016/17 compared to 24.5% in 2020/21)

24.5% of Offenders in Westmorland & Furness Re-offended (2020/21).

Eden Locality Area has the highest average number of re-offences per reoffender (4.0)

Highest levels of Reoffending occurred in the Furness Locality (28% of Offenders reoffended)

Rural Crime

Quad Bike and livestock (sheep) theft offences have decreased in Westmorland & Furness over the last year (November 2022-November 2023)

Quad Bike thefts decreased by 38.9% (-21 thefts)

Livestock thefts decreased by 20.1% (-4 thefts)

Farming Communities are at risk of theft by Organised Crime Gangs

Indicator	Value (2022/23)	Rate per 1k Population/ DSR 100k Population	England & Wales (Rate or Value)	RAG Compared to National Rate	Trend over 5 years
Violence Against the Person	6,829	30.1	35.4		Increase
Hospital Admissions for Violence (incl. SV)	165	29.2	41.9		N/A
Reoffending Levels (average number of offences per reoffender)	3.3	N/A	3.6		decrease
Proportion of Offenders who Reoffend (2020/21)	24.5%	N/A	24.3%		decrease
Proportion of Juvenile Offenders who Reoffend (2020/21)	28.8%	N/A	30.5%		decrease

Violent Crime

Violence against the person offences have shown a steady increase over the last five years.

Violence against the person offences are occurring at a rate of 30.1 per 1,000 population, slightly lower than the national figure (35.4)

When compared against previous reporting period (2017/18-2019/20) the rates of hospital admissions for violence per 100k population shows a small decrease across all W&F Locality areas

Improvements to Police recording practices are thought to be the reason for the recorded increase of violence against the person offences

Young People

Overall Westmorland & Furness have seen reductions in Juvenile Reoffending Levels since 2016 (-74.6%)

Youth First Time Entrants (FTE) into Criminal Justice System in Cumbria is showing a steady decline over recent years (2018; 122 FTEs / 2022; 61 FTEs)

Nationally custodial sentences for young people are decreasing

This declining trend may be as a result of the implementation of the *Child First, Offender Second Approach*

Offenders managed by the National Probation Service are most likely to be male aged 35+ years

Offenders of Violent Crimes are most likely to be male/transgender male, aged 21-40 years old

Victims of Violence against the person (alcohol related) are most likely to be aged 21-40 years

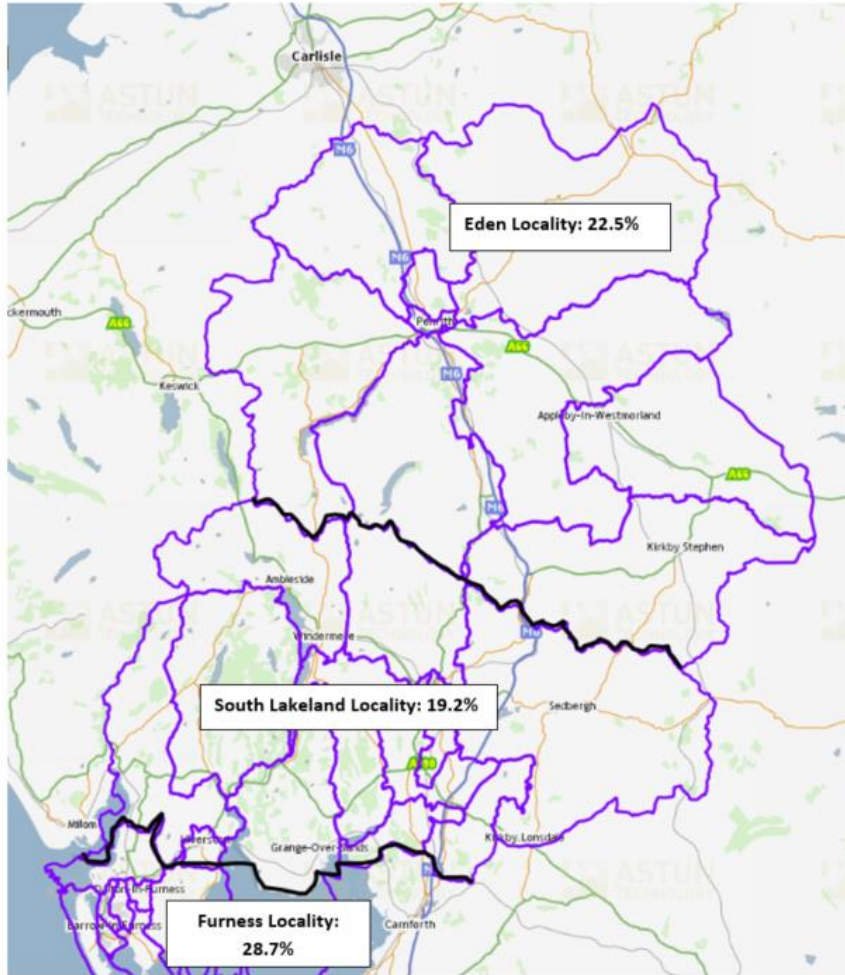
FTE defined as Offender aged 10-17 years who has received their first reprimand, warning, caution or conviction



Reducing Crime

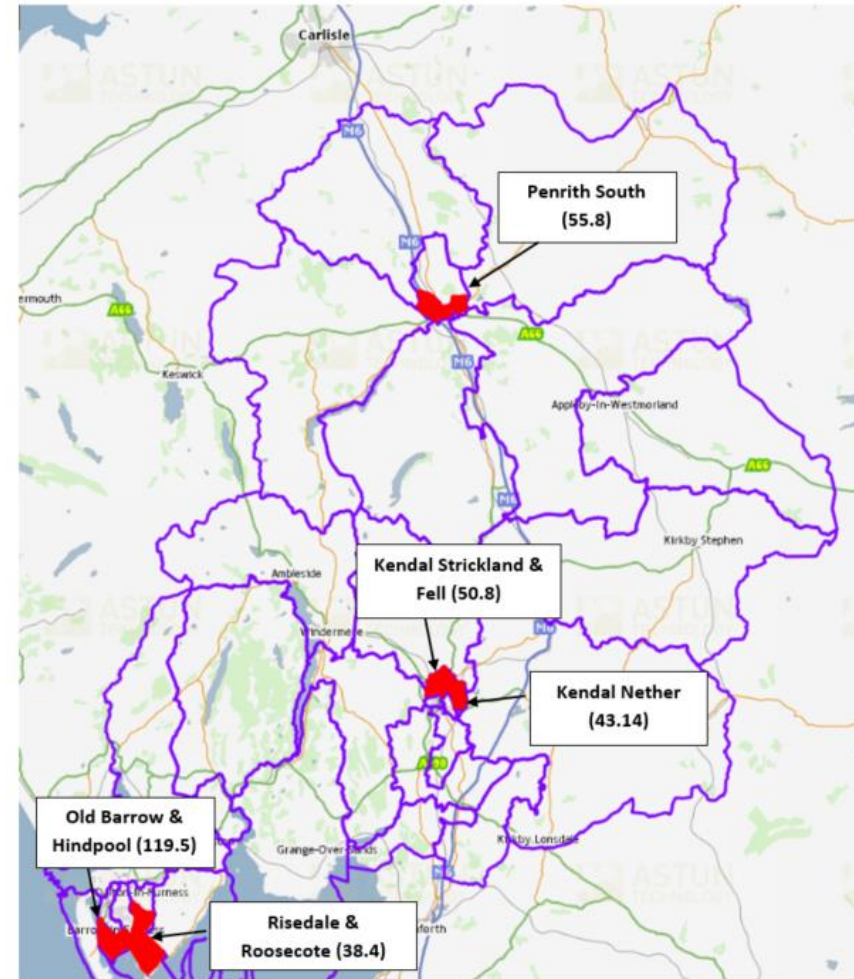
Priority

Proportion of Offenders who Reoffend
(Locality Areas)



Proportion of Offenders who Reoffend (Locality Areas) © Crown Copyright. All rights reserved. Licence No: 100023754

Top 5 Wards with highest Violence Against the Person Rates, per 1,000 population



Violence Against the Person, Rate per 1,000 population © Crown Copyright. All rights reserved. Licence No: 100023754





Domestic Abuse

Domestic Abuse related Crimes = Crimes recorded under the National Crime Recording Standard (NCRS)

Domestic Abuse related Incidents = Domestic Abuse reported to/investigated by the Police that did not result in a crime being recorded under the NCRS

Indicator	Value (2022/23)	Rate per 1k Population/ DSR 100k Population	England & Wales (Rate or Value)	RAG Compared to National Rate	Trend over 5 years
Domestic Abuse Safeguarding Records	3,322	14.6	N/A	N/A	Increase
Domestic Abuse Related Incidents and Crimes- Cumbria	9,814	19.6	24.4		Increase
Stalking & Harassment	2,157	9.5	11.9		Increase
VAWG	3,520	33.5	N/A		N/A



Domestic Abuse Related Incidents & Crimes

Domestic Abuse related crimes and incidents have seen a steady increase nationally, regionally and locally since 2018.

6% increase in incidents and crimes in Cumbria since 2019 (+554 incidents and crimes)

Compared to the 43 Police Force Areas across England & Wales, Cumbria is ranked 16th lowest rate of Domestic Abuse related crimes and incidents.

The steady increase in Domestic Abuse incidents and crimes is thought to reflect police forces improving identification & recording practices and an increased willingness by victims to come forward



Safeguarding records show victims were most likely to be aged 25-44 years old



Safeguarding records show three quarters of victims were female

Domestic Abuse Safeguarding Records



There has been a steady increase across the County over the last five years of the number of Domestic Abuse Safeguarding Records (+9.2% in Westmorland & Furness)

5% of domestic abuse safeguarding records were categorised as high risk (410)

Furness Locality has the highest rate for domestic abuse safeguarding records at 23.8 per 1,000 population (Eden: 10.9 / South Lakeland: 10.7)

Rurality is a significant barrier for victims of domestic abuse, with services harder to access and rural societal structure making escape less likely. Rural victims are half as likely to report abuse as urban victims. 54.6% of Westmorland & Furness' population live in areas defined as rural by the ONS

Domestic Abuse Support

383 people received Victim Support. +4.1% increase compared to previous year (2021-22)


Supported Domestic Abuse cases = 1.7 per 1k population

46.0% of cases categorised as High Risk

Furness Locality had the highest rate for domestic abuse supported cases of 2.4 per 1,000 population



Domestic Abuse Victims supported by Victim Support are most likely to be aged 25 too 44 years old



The majority of supported victims are female. In Cumbria 1 in 9 victims are male

Under reporting may be a problem for male victims, those with disabilities, LGBTQ, young victims (16-18 years) and older victims (those aged 65+)





Domestic Abuse



Violence Against Women & Girls (VAWG)

3.1% increase of VAWG offences compared to previous year (2021/22). 7.9% increase in Public Order related offences

VAWG rate highest in Furness Locality (51.3 per 1,000 population)

Stalking & Harassment offences have increased by 69.7% since 2018 (2018/19: 1,271; 2022/23: 2,157)

Stalking & Harassment offences are occurring at a rate of 9.5 per 1,000 population

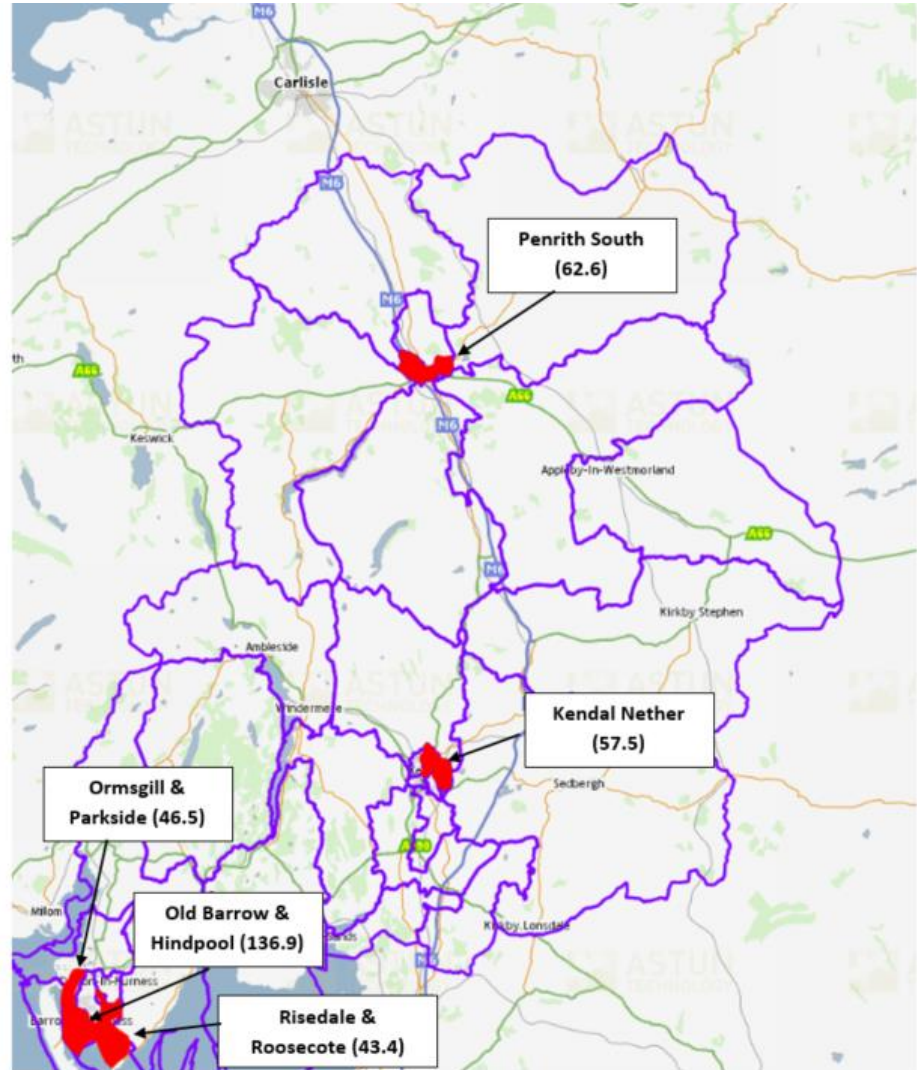
Increase of VAWG offences may reflect improved recording practices and the impact of high profile cases and campaigns on victims' willingness to report both recent and historical incidents

Cumbria Constabulary's *Call It Out Survey* (2023) identified 97.3% of respondents who had experienced a crime, but didn't report it were female



Victims of VAWG must be female aged 10 years and over at time of crime

Top 5 Wards with highest VAWG Rates per 1,000 Population



Westmorland & Furness Wards with Highest VAWG Rates © Crown Copyright. All rights reserved. Licence No: 100023754





Road Safety

Indicator	Value (2022)	Rate per 1k Population/ DSR 100k Population	England & Wales (Rate or Value)	RAG Compared to National Rate	Trend over 5 years
Number of Road Traffic Accidents	537				Decrease
Number of Road Traffic Accidents resulted in Death or Serious Injury	150	0.7	0.5		No change
Number of Road Traffic Accidents involving Children	10	6.7	8.2		No change



Road Traffic Accidents

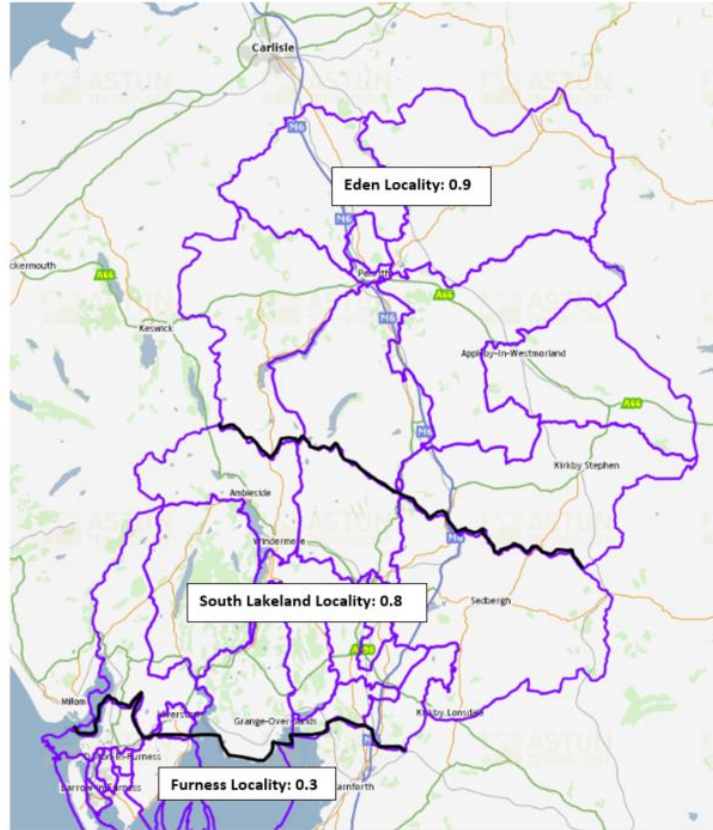
Since 2018 there has been a -28.1% decline in Road Traffic Accidents in Westmorland & Furness (747 (2018) v 537 (2022))

27.9% of Road Traffic Accidents that occurred in Westmorland & Furness resulted in Death or Serious Injury (2022)

Since 2018 there has been a small decrease (-2.0%) in the number of accidents resulting in death or serious injury

Eden Locality had the highest rate of accidents resulting in death or serious injury per 1,000 population (0.9 Eden / 0.8 South Lakeland / Furness 0.3)

Road Traffic Accidents Resulting in Death or Serious Injury- rate per 1,000 Population (Locality Areas)



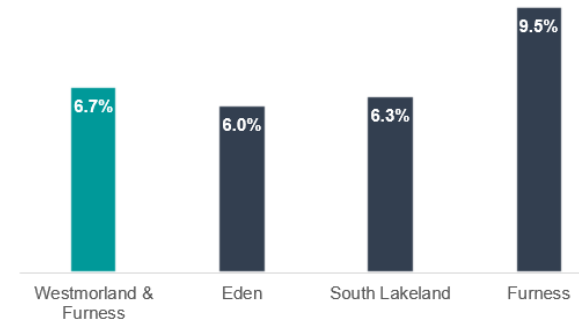
Road Traffic Accidents resulting in Death or Serious Injury, Rate per 1,000 population (Locality Areas) © Crown Copyright. All rights reserved. Licence No: 100023754

Road Traffic Accidents Involving Children

6.7% of Road accidents that resulted in death or serious injury involved children (2022)

Furness Locality had the highest percentage of road traffic accidents resulting in death or serious injury of a child of all Westmorland and Furness Locality areas (9.5% Furness / 6.0% Eden / 6.3% South Lakeland)

Percentage of Accidents resulting in Death or Serious Injury, Children (Locality Areas)



Sexual Abuse & Exploitation

Indicator	Value (2022/23)	Rate per 1k Population/ DSR 100k Population	England & Wales (Rate or Value)	RAG Compared to National Rate	Trend over 5 years
Sexual Offences	662	2.9	3.3		No Change
Sexual Offences (alcohol related)	113	0.5	N/A		Decrease
Child Sexual Abuse	286	7.3	N/A		N/A
Modern Slavery (Cumbria- NRM)	12	N/A	3,573	N/A	N/A



Sexual Offences

+2.2% increase of Sexual offences compared to previous year (2021-22) (+14 offences)

Police recorded sexual offences increased by +20% nationally in 2022-23 compared to the pre-coronavirus pandemic year (year ending March 2020)

Highest rates of sexual offences (per 1k population) was seen in the Furness Locality (3.8)

286 Offences with a Child Sexual Abuse or Child Exploitation marker

The increase in police recorded sexual violence may reflect the impact of high-profile cases and campaigns on victims' willingness to report incidents

Victims of sexual offences are most likely to be female

Alcohol Related Sexual Offences

17.1% of all sexual offences in Westmorland & Furness were alcohol related

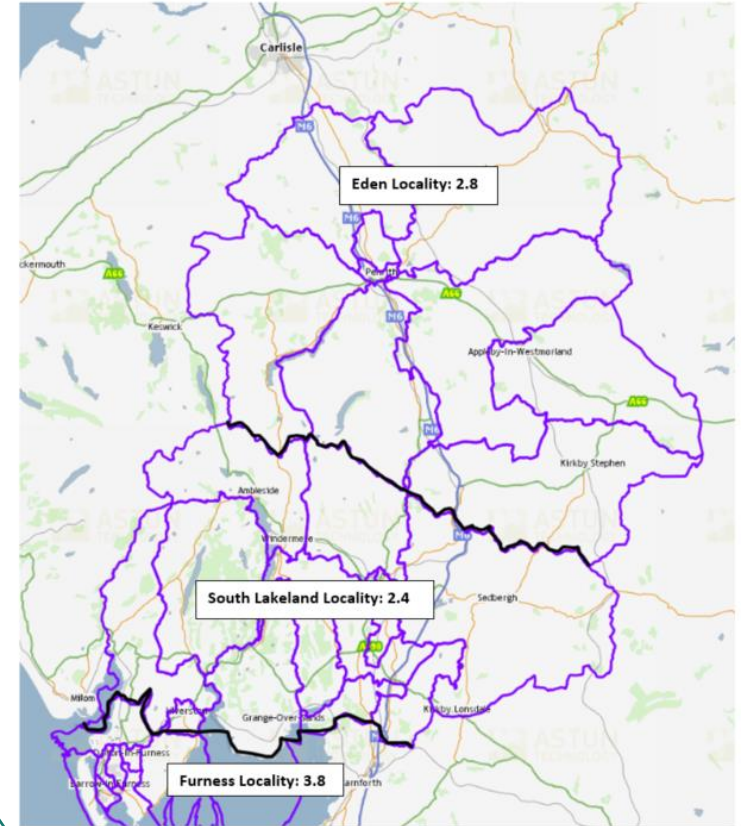
Modern Slavery

Referrals of possible Modern Slavery Victims in Cumbria equates to 0.33% of all referrals made in England (For period 1 April 23- 30 June 23)

The Crime Survey for England & Wales (2022-23) highlights issues of under-reporting. Survey estimates suggest that fewer than 1 in 6 victims of rape or assault by penetration are reporting the crime to the police

Females are more likely to be victims of rape than males

Sexual Offences Rate per 1k Population (Locality Areas)



Sexual Offences Rate per 1,000 population (Locality Areas) © Crown Copyright. All rights reserved. Licence No: 100023754



Substance Misuse (Drug & Alcohol)

Drug Related Offences

20.6% increase in drug offences (trafficking in possession) in Westmorland & Furness compared to the previous year (2021-22) (+79 offences)

The Furness and Eden Locality areas have the highest rate of drug offences per 1,000 population in Westmorland and Furness at 2.3 (South Lakeland 1.8)

Deaths relating to Drug Misuse

There were 18 deaths in Westmorland & Furness relating to Drug Misuse (2021). A small decrease compared to the previous year (2020) (-4 deaths)

The Cumbria Drug & Alcohol Joint Strategic Assessment (2022) highlights that whilst the proportion of the population who are affected by drug misuse is relatively small, its impacts are significant and often felt across the wider community

1 in 5 Adults aged 16 to 24 years old reported using drugs in the year ending June 2022
The Crime Survey for England & Wales

Alcohol Specific Hospital Admissions

7.1% increase in the number of Alcohol specific hospital admissions (all persons) in Westmorland & Furness compared to the previous year (2019/20) (+80 Admissions)

The Furness Locality has a alcohol specific hospital admission rate of 823.0 per 100,000 population, exceeding the national rate (626.0)

The Furness Locality has the highest rate of alcohol specific hospital admissions of under 18 year olds per 100,000 population at 50.6

The Cumbria Drug & Alcohol Joint Strategic Assessment (2022) states that there is an estimated 5,337 adults who are dependent upon alcohol in Cumbria (1.31 per 1,000 population)

Those living in deprived areas are more likely to die from alcohol reported causes or attend hospital for alcohol related reasons

Alcohol Specific Mortality

There were 84 deaths in Cumbria that were a result of alcohol specific conditions during 2021

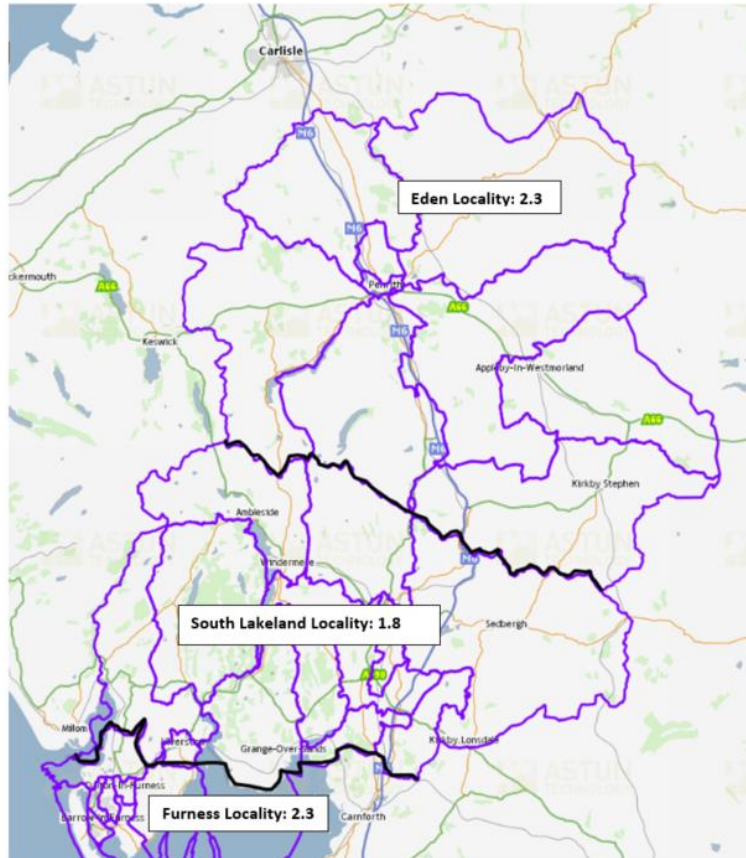
The rate of alcohol specific mortality in the Furness Locality for both males and females exceed the national rates

Alcohol Change UK suggests less affluent communities tend to have increased numbers of residents with complex needs and a lack of support services

Indicator	Value (2022/23)	Rate per 1k Population/ DSR 100k Population	England & Wales (Rate or Value)	RAG Compared to National Rate	Trend over 5 years
Drug Trafficking & Possession	463	2.0	3.0		No change
Alcohol Specific Hospital Admissions (All Ages) 2021-22	1,205	486.0	626.0		N/A
Alcohol Specific Hospital Admissions (Under 18) 2021-22	50	41.8	29.3		N/A
Alcohol Specific Mortality (males, all ages) 2021-22	55	10.5	14.9		N/A
Alcohol Specific Mortality (female, all ages) 2021-22	24	8.3	7.1		N/A

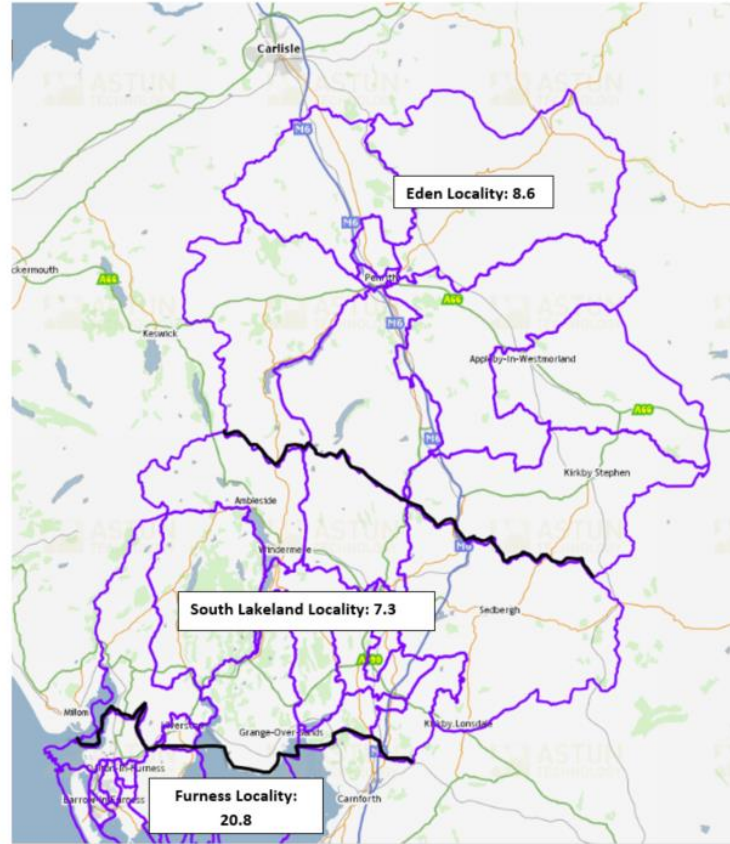
Substance Misuse (Drug and Alcohol)

Drug Offences (Trafficking & Possession), Rate per 1,000 Population (Locality Areas)



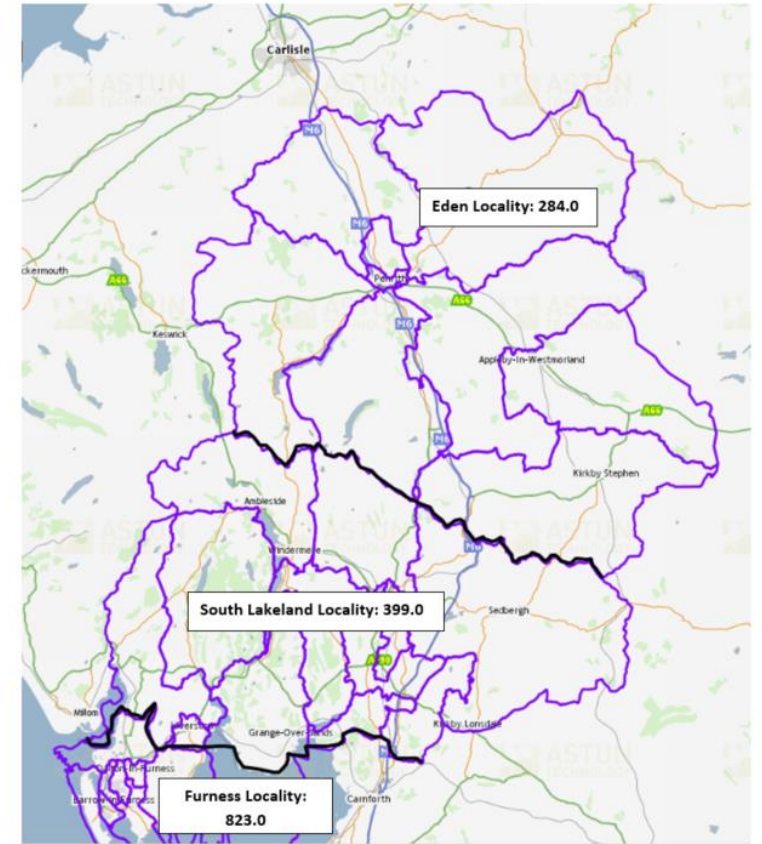
Drug Offences, Rate per 1,000 Population (Locality Areas) © Crown Copyright. All rights reserved. Licence No: 100023754

Deaths related to Drug Poisoning, Rates per 100,000 Population (Locality Areas)



Deaths related to Drug Poisoning, Rates per 100,000 Population (Locality Areas) © Crown Copyright. All rights reserved. Licence No: 100023754

Alcohol Specific Hospital Admissions (all persons), Rates per 100,000 Population (Locality Areas)



Alcohol Specific Hospital Admissions (all ages), Rates per 100,000 Population (Locality Areas) © Crown Copyright. All rights reserved. Licence No: 100023754



